

Sioux NextGen™ Water Heaters

Advanced Technology
Simple Operation



1,000,000 BTU/Hr



1,700,000 BTU/Hr



5,000,000 BTU/Hr

The Next Generation from the Leader in Industrial Water Heaters

Sioux water heaters are used worldwide in a variety of industrial applications. Sioux's NextGen™ water heaters come with advanced features to make the process of heating water safe, quick, and efficient. These horizontal heat exchanger units provide a continuous supply of hot water within minutes of startup with an efficient and simple design.



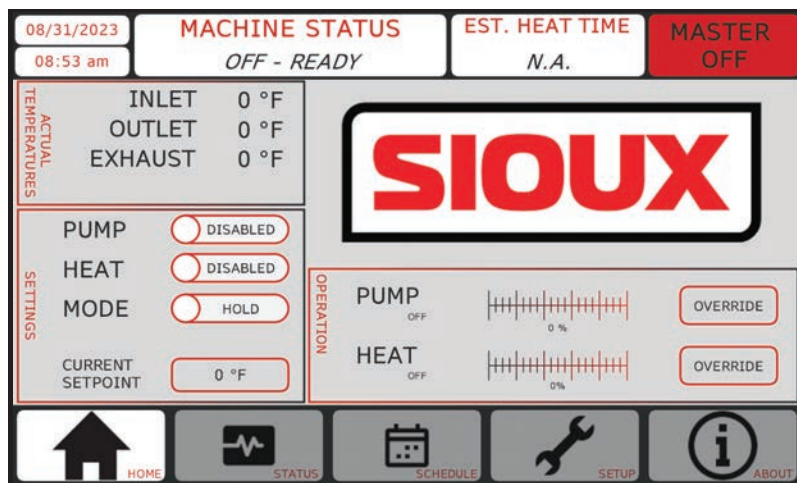
Sioux WHC3.0PG
• 3,000,000 BTU/HR

Performance

- BTU ratings are 1.0, 1.7, 3.0, or 5.0 Million BTU/Hr heat output.
- Primary electricals are 230/1Ph/60Hz, 230V/3Ph/60Hz, 460/3Ph/60Hz, and 575/3Ph/60Hz.
- Available with Diesel, LP, Natural Gas or Combination burners.

Operation/Maintenance

- Remote connectivity gives you the ability to monitor and operate from a remote location.
- PLC functionality provides automatic scale monitoring and notification; maintenance alerts; burner and thermocouple monitoring (including fault codes); estimated time to heat; ability to set operation schedule and tank temperature; ability to integrate operation and monitoring of Sioux Tank Skid package; and data logging.
- Variable Frequency Drive (VFD) standard on 1.7, 3.0, & 5.0 models allows the heater to achieve higher outlet temperature in a single pass and reduces electrical consumption during idle times.
- Vacuum gauges for y-strainer will indicate when clean out is required.
- Condensation outlet fitting drains condensate to a single point on the skid edge.



**Intuitive Touch Screen
Control for the NextGen™**

Safety

- Standard safety devices include emergency stop switch; exhaust temperature limit switch; inner and outer coil flow switches; and temperature limits.

Industrial Construction

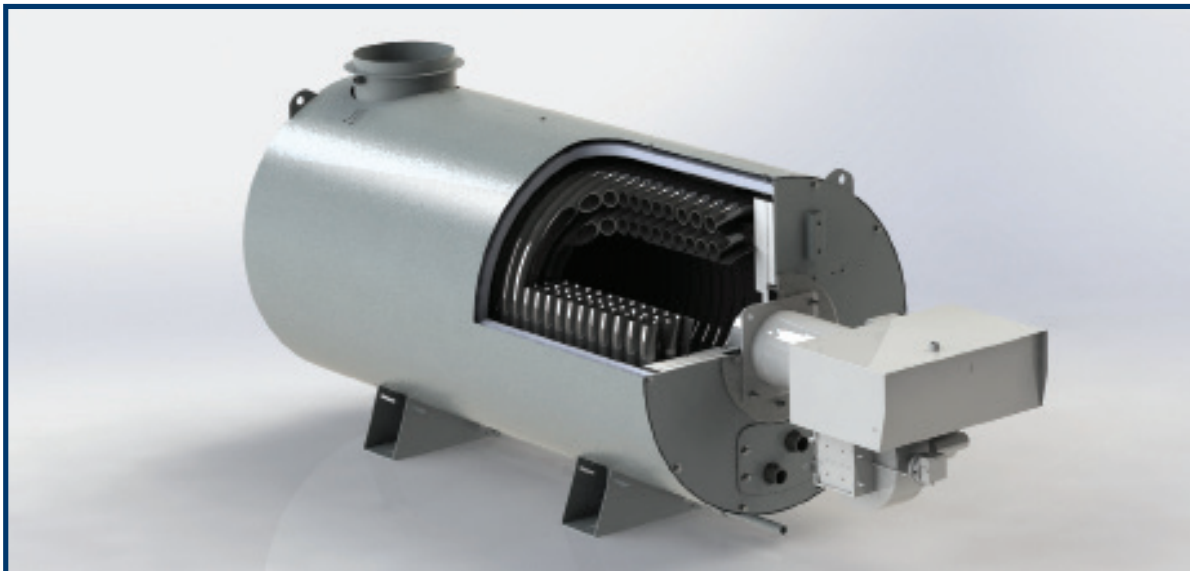
- Powder coated heavy-duty skid, built in lift points, and 4-way forklift access.
- Optimized skid dimensions and weight.
- Designed with high flow cast iron pump for long life.
- Groove fittings for easy maintenance of common service items such as coil removal and isolating inner and outer coil for winterization/blow down. Used on inlet and outlet connections on WH3.0 and WH5.0.

Flexibility

- Carbon or stainless steel heat exchangers.
- Available Lo/Hi/Lo and Modulating burners allow you to achieve higher tank temperatures.
- Alternate voltages available.
- Custom options available.

Certification & Standards

- Built to ASME Code Section IV and registered with the National Board of Boiler and Pressure Vessel Inspectors.
- Canadian Registration Number (CRN).
- Electrical panel meets UL-508a and CSA C22.2 #14.
- Sioux water heaters are engineered and built utilizing Sioux's modern manufacturing processes.



**Sioux's NextGen™ water heaters utilize
an efficient 3-pass heat exchanger**

Water Heaters with Carbon Steel Heat Exchanger



Utilizing decades of customer application experience with industrial water heaters, Sioux developed the NextGen™ series. These innovative water heaters with carbon steel heat exchanger have advanced features to meet your need for efficient hot water with ease of use, monitoring, and maintenance. Sioux carbon steel water heaters provide hot water for a variety of applications.

Sioux WHC1.7PD
 • 1,700,000 BTU/HR with Carbon Steel Heat Exchanger

Carbon Steel Heat Exchanger Models

SIOUX MODEL NUMBER	HEAT OUTPUT MM BTU/Hr	Fuel Type	Standard Electrical	Standard Pump	Standard Burner	GPM		Temp Rise	
		NG/LP Diesel Combo	Volts/Phase/Hertz	On-Off VFD	On-Off Lo/Hi/Lo Modulating	Min	Max	@ Min GPM	@ Max GPM
MODELS DO NOT INCLUDE WATER TANK									
WHC1.0PG	1.0	NG/LP	460/3/60	On-Off	On-Off	35	90	57°F	22°F
WHC1.0PD	1.0	Diesel	460/3/60	On-Off	Lo/Hi/Lo	35	90	57°F	22°F
WHC1.0PC	1.0	Combo	460/3/60	On-Off	On-Off	35	90	57°F	22°F
WHC1.7PG	1.7	NG/LP	460/3/60	VFD	On-Off	40	105	85°F	32°F
WHC1.7PD	1.7	Diesel	460/3/60	VFD	Lo/Hi/Lo	40	105	85°F	32°F
WHC1.7PC	1.7	Combo	460/3/60	VFD	On-Off	40	105	85°F	32°F
WHC3.0PG	3.0	NG/LP	460/3/60	VFD	Modulating	65	180	92°F	33°F
WHC3.0PD	3.0	Diesel	460/3/60	VFD	Modulating	65	180	92°F	33°F
WHC3.0PC	3.0	Combo	460/3/60	VFD	Modulating	65	180	92°F	33°F
WHC5.0PG	5.0	NG/LP	460/3/60	VFD	Modulating	125	325	80°F	31°F
WHC5.0PD	5.0	Diesel	460/3/60	VFD	Modulating	125	325	80°F	31°F
WHC5.0PC	5.0	Combo	460/3/60	VFD	Modulating	125	325	80°F	31°F

Water Heaters with Stainless Steel Heat Exchanger

For applications that cannot utilize the standard carbon steel models, Sioux offers water heaters with Schedule 40 stainless-steel heat exchanger and non-ferrous, wetted parts. All Sioux stainless steel heat exchangers are manufactured in house. These water heaters provide the same performance and features for specific applications that require stainless steel.



Sioux WHS3.0PG
• 3,000,000 BTU/HR with Stainless Steel Heat Exchanger

Stainless Steel Heat Exchanger Models

SIOUX MODEL NUMBER	HEAT OUTPUT MM BTU/Hr	Fuel Type	Standard Electrical	Standard Pump	Standard Burner	GPM		Temp Rise	
		NG/LP Diesel Combo	Volts/ Phase/ Hertz	On-Off VFD	On-Off Lo/Hi/Lo Modulating	Min	Max	@ Min GPM	@ Max GPM
MODELS DO NOT INCLUDE WATER TANK									
WHS1.0PG	1.0	NG/LP	460/3/60	On-Off	On-Off	35	90	57°F	22°F
WHS1.0PD	1.0	Diesel	460/3/60	On-Off	Lo/Hi/Lo	35	90	57°F	22°F
WHS1.0PC	1.0	Combo	460/3/60	On-Off	On-Off	35	90	57°F	22°F
WHS1.7PG	1.7	NG/LP	460/3/60	VFD	On-Off	40	105	85°F	32°F
WHS1.7PD	1.7	Diesel	460/3/60	VFD	Lo/Hi/Lo	40	105	85°F	32°F
WHS1.7PC	1.7	Combo	460/3/60	VFD	On-Off	40	105	85°F	32°F
WHS3.0PG	3.0	NG/LP	460/3/60	VFD	Modulating	65	180	92°F	33°F
WHS3.0PD	3.0	Diesel	460/3/60	VFD	Modulating	65	180	92°F	33°F
WHS3.0PC	3.0	Combo	460/3/60	VFD	Modulating	65	180	92°F	33°F
WHS5.0PG	5.0	NG/LP	460/3/60	VFD	Modulating	125	325	80°F	31°F
WHS5.0PD	5.0	Diesel	460/3/60	VFD	Modulating	125	325	80°F	31°F
WHS5.0PC	5.0	Combo	460/3/60	VFD	Modulating	125	325	80°F	31°F

Carbon Steel Applications

- Hot Water for Ready Mix Concrete
- Hot Water for Precast Concrete
- Process and Fluid Heating
- Industrial Manufacturing
- Frac Tank Heating

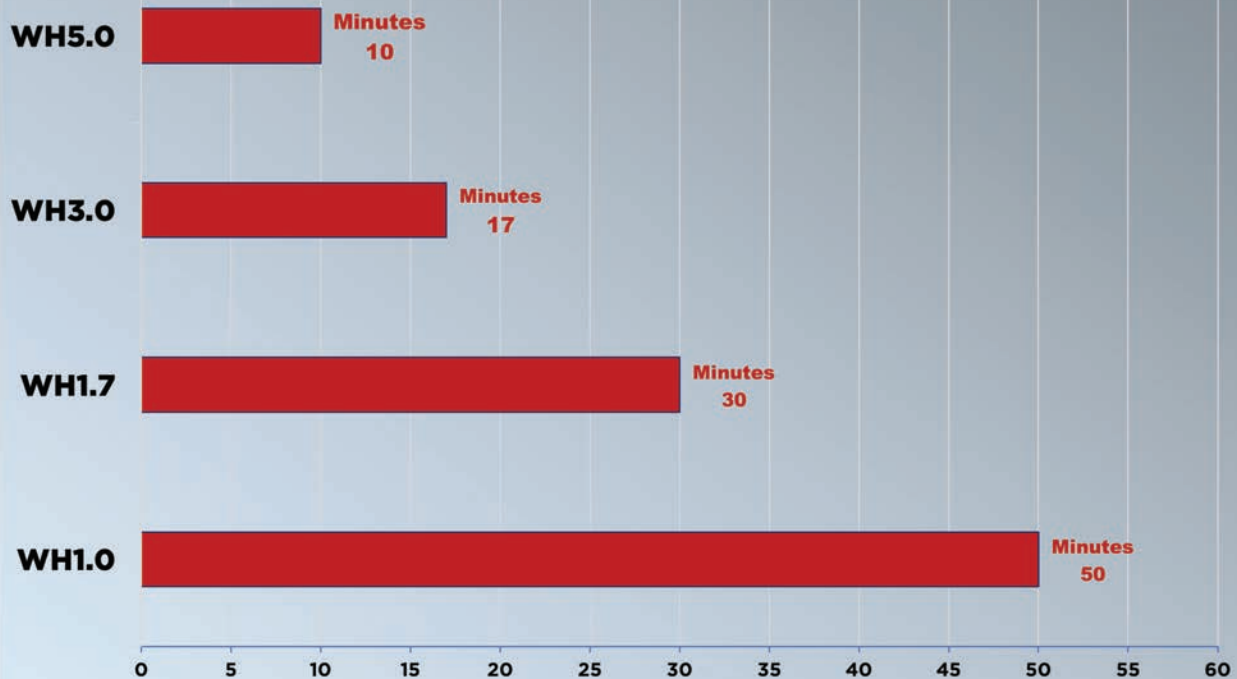


Sioux WHC5.0PG
• 5,000,000 BTU/HR

Stainless Steel Applications

- Corrosive Applications
- Food & Beverage Manufacturing
- Pharmaceutical Manufacturing
- DEF Production
- Specialized Process and Fluid Heating
- CIP or COP Cleaning in Processing Facilities

WATER HEATING TIMES



Minutes to Heat 1,000 Gallons to a 100°F Temp Rise

Water Heaters with Tank Included

If you need an integrated water tank, Sioux offers NextGen™ water heaters with 1.0 or 1.7 Million BTU/Hr output and included water tank. These turn-key water heaters come ready to use. Connect the inlet and outlet water, plus utilities, and you are ready to make hot water.



Sioux WHC1.7PG-T
• 1,700,000 BTU/HR
with 365 gallon tank

Models with Water Tank

SIOUX MODEL NUMBER	HEAT OUTPUT MM BTU/Hr	Fuel Type NG/LP Diesel Combo	Standard Electrical Volts/ Phase/ Hertz	Standard Pump On-Off VFD	Standard Burner On-Off Lo/Hi/Lo Modulating	GPM		Temp Rise	
						Min	Max	@ Min GPM	@ Max GPM
MODELS WITH 300 GALLON INTEGRATED TANK									
WHC1.0PG-T	1.0	NG/LP	460/3/60	On-Off	On-Off	35	90	57°F	22°F
WHC1.0PD-T	1.0	Diesel	460/3/60	On-Off	Lo/Hi/Lo	35	90	57°F	22°F
WHC1.0PC-T	1.0	Combo	460/3/60	On-Off	On-Off	35	90	57°F	22°F
WHC1.7PG-T	1.7	NG/LP	460/3/60	VFD	On-Off	40	105	85°F	32°F
WHC1.7PD-T	1.7	Diesel	460/3/60	VFD	Lo/Hi/Lo	40	105	85°F	32°F
WHC1.7PC-T	1.7	Combo	460/3/60	VFD	On-Off	40	105	85°F	32°F
WHS1.0PG-T	1.0	NG/LP	460/3/60	On-Off	On-Off	35	90	57°F	22°F
WHS1.0PD-T	1.0	Diesel	460/3/60	On-Off	Lo/Hi/Lo	35	90	57°F	22°F
WHS1.0PC-T	1.0	Combo	460/3/60	On-Off	On-Off	35	90	57°F	22°F
WHS1.7PG-T	1.7	NG/LP	460/3/60	VFD	On-Off	40	105	85°F	32°F
WHS1.7PD-T	1.7	Diesel	460/3/60	VFD	Lo/Hi/Lo	40	105	85°F	32°F
WHS1.7PC-T	1.7	Combo	460/3/60	VFD	On-Off	40	105	85°F	32°F

WHC-Carbon Steel

WHS-Stainless Steel

Sioux Tank Skid Packages

Sioux manufactures water tanks in either 1,000 or 2,500 gallons for use with our water heaters. Standard tank packages include a carbon steel tank with powder paint finish, 10HP or 15HP motor and centrifugal pumping station, a NEMA 4 watertight electrical enclosure with On/Off switch. Standard electrical connection is 230 or 460V/3Ph/60Hz.

Each tank package also includes an inlet water y-strainer, liquid level switch to maintain proper water level, a 2" inlet water solenoid valve, and ports on the tank for inlet and outlet water connections to the water heater or chiller. The entire package is mounted on a forklift accessible skid for proper placement in your facility. The skid also includes space for the addition of another 3, 5, or 7.5HP motor and pump if desired. Spray foam insulation of a 1" nominal thickness can be added for an additional cost.



Water Heater Accessories

Sioux can provide you with the accessories needed to complete your water heater install and help keep it running at peak efficiency for years to come.

- **Pumping Stations**
- **Blending Valves**
- **Exhaust & Venting Components including Dampers**
- **Plumbing - Pumps, Regulators, & Valves**
- **Water Treatment**



R.W. Martin Process Water Solutions

4675 Mogadore Road • Kent, Ohio 44240 USA

Toll Free: 800.635.4363 • Tel: 330.673.8712

info@rwmartin.com • rwmartin.com

Office Hours: 8:00am - 5:00pm Eastern Time, Monday - Friday

